



Community Renewal Team
Changing lives... Creating opportunity!

ADDENDUM II
RFP 2021 Cleaning Services
October 4, 2021

I received the following questions and have added some additional information:

1. There are two scheduled minimum wage increases during this two year contract. Should our monthly pricing include these increases, or will you accept increases to the billable amount at the time of the scheduled increase?
We request that you complete the attached REVISED Pricing Grid and not only submit for current monthly charges but for annual charges for 2021-2022 & 2022-2023 including anticipated increases – monthly charges will be used for the contract until the minimum wage increases become in effect.

2. Are covid-19 vaccines required for all of the contractors onsite personnel(Per CT Exec order 13D)?
For the safety of our staff, visitors and contractors, CRT requests that all visitors to our sites take the necessary precautions by wearing masks, gloves, and using hand sanitizer. When entering buildings that are open all need to follow the Covid protocols we have in place including completing the Covid form and taking your temperature. Contractors will be notified of any changes or expectations.

3. Is 100 William Shorty Campbell Blvd an after-hours cleaning?
Yes, cleaning for this site is after hours starting at 5:30pm.
395 Wethersfield Ave cleaning can begin at 5:30pm if the building is still open the crew needs to let someone know they have arrived.
170 Douglas Street – cleaning can begin at 5:30pm if the building is still open the crew needs to let someone know they have arrived.
555 Windsor Street – cleaning can only be done between 4pm – 8pm as the building is closed at 8pm.
330 Market Street – cleaning can begin on the 2nd floor starting at 5pm, the 1st and Lower Level cannot be started until staff and clients have left the building – these floors operate until 8pm most nights.

Please find the evacuation plans for each site:

1. 395 Wethersfield Ave
2. 555 Windsor Street 2nd Floor
3. 100 William Shorty Campbell Blvd (Job Corps)
4. 170 Douglas Street (2 floors)
5. 330 Market Street (3 floors)

**ATTACHMENT III
BID PRICING GRID REVISED**

Please complete the table below for the sites you are interested in providing services for, you do not have to bid on all sites. You can only submit for those sites you attended the walk-through for.

Please refer to the calendar that was issued with Addendum I outlining CRT Holidays and additional ECE sites closed days.

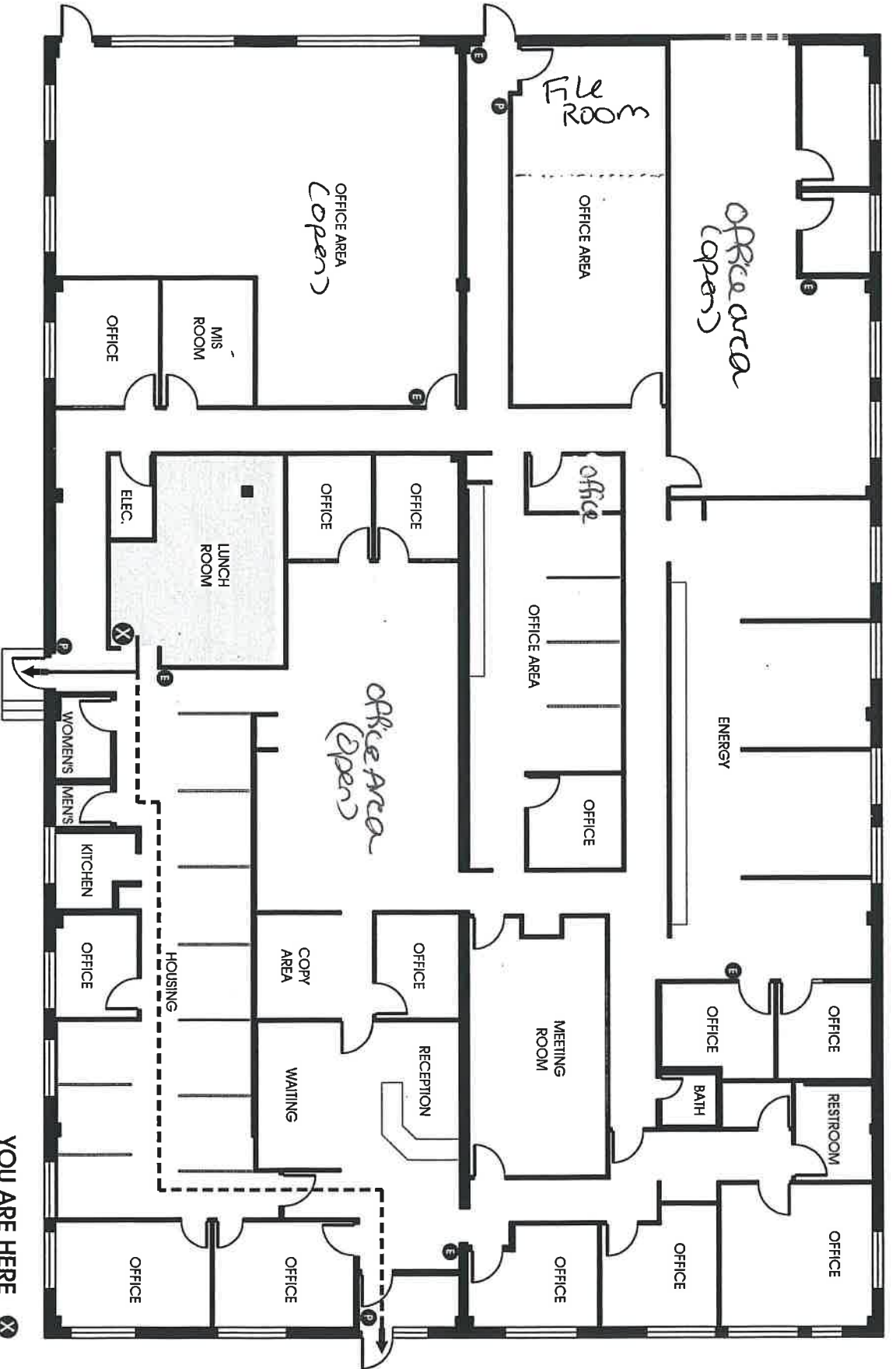
In addition, if you anticipate any increases in cost during the two (2) year contract because of minimum wage increases please ensure that this is included in your yearly totals below. The monthly total will be for the start of the contract the awarded vendor(s) will notify CRT when an increase is to become effective.

Vendor Name: _____

Location	# of Staff Assigned to Location	# of Hours Staff at Location Nightly	Total Monthly Cost(\$) (including quarterly carpet cleaning for ECE sites)	Total Annual Cost 2021 – 2022 Includes minimum wage increases	Total Annual Cost 2022- 2023 Includes minimum wage increases
395 Wethersfield Avenue, Hartford					
555 Windsor Street, 2 nd Floor, Hartford* *Note: cleaning to be done between 4pm – 8pm					
170 Douglas Street, Hartford*					
100 William Shorty Blvd, Hartford*					
330 Market Street, Hartford					
*Indicates Early Care & Education (ECE) Site					

*CRT is an Affirmative Action/Equal Opportunity Employer.
Minority/Women's business Enterprises are encouraged to apply.*

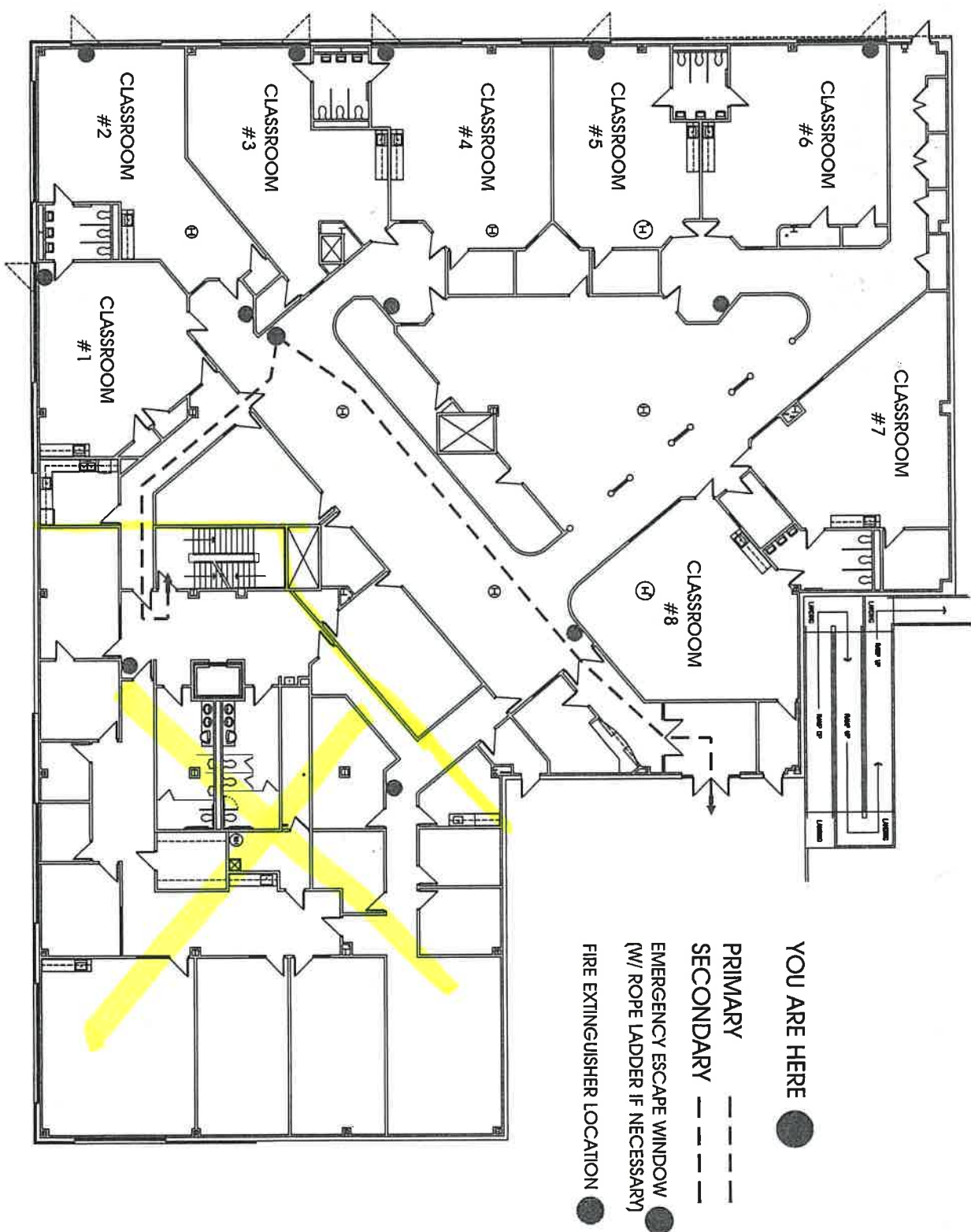




395 Wethersfield Ave
 Hartford, CT

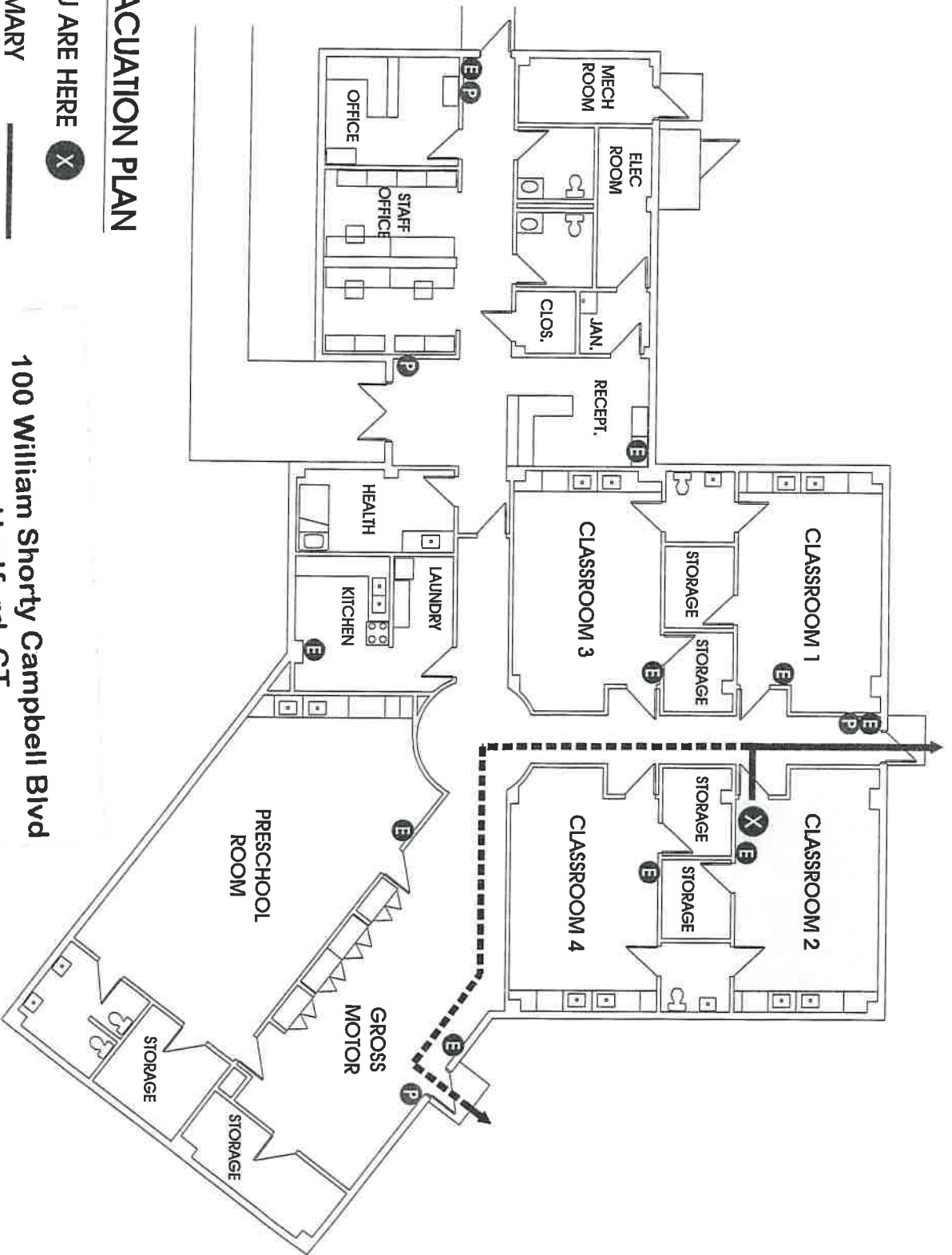
- YOU ARE HERE (X)
 - PRIMARY _____
 - SECONDARY - - - - -
 - FIRE EXTINGUISHER LOCATION (E)
 - FIRE ALARM PULL STATION (P)
- IN CASE OF EMERGENCY FOLLOW EXIT SIGNS TO EXIT

555 Windsor Street, 2nd Floor
ECE Side ONLY



2ND FLOOR

IN CASE OF EMERGENCY FOLLOW EXIT SIGNS TO EXIT



EVACUATION PLAN

YOU ARE HERE **X**

PRIMARY _____

SECONDARY - - - - -

FIRE EXTINGUISHER LOCATION **E**

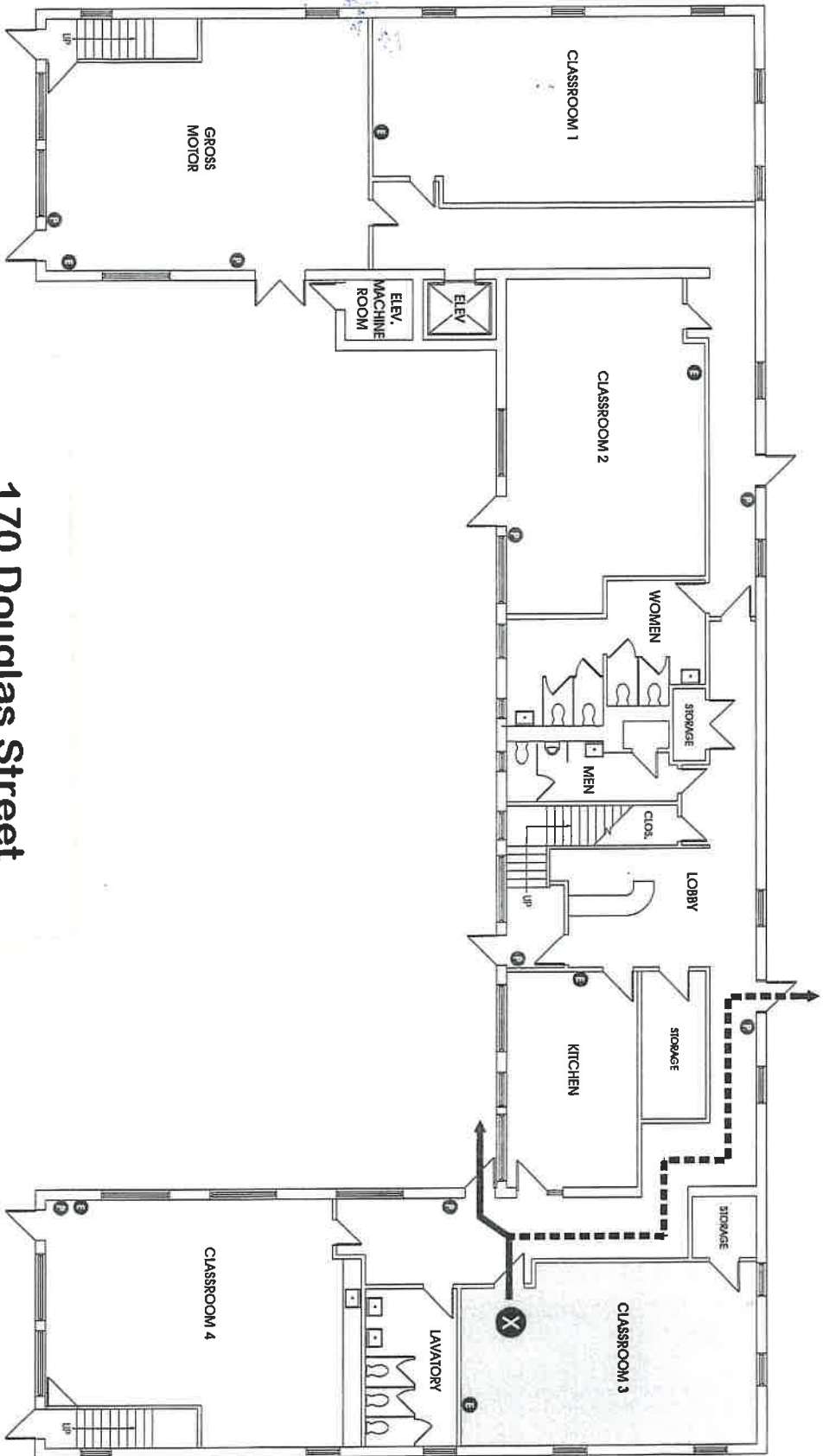
FIRE ALARM PULL STATION LOCATION **P**

100 William Shortly Campbell Blvd
Hartford, CT

IN CASE OF EMERGENCY FOLLOW EXIT SIGNS TO EXIT

FLOOR PLAN

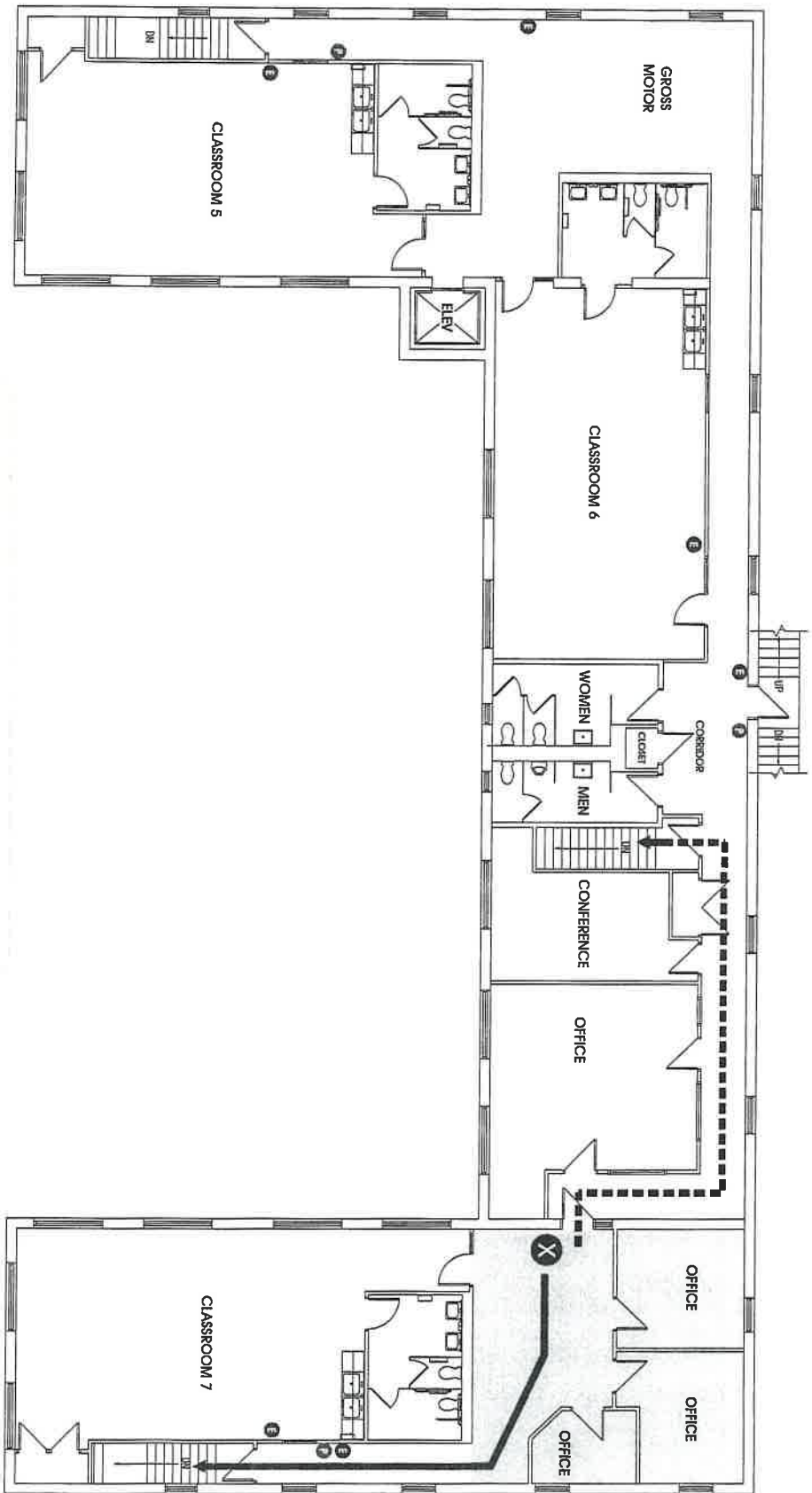
170 Douglas Street
Hartford, CT



FIRST FLOOR
EVACUATION PLAN

IN CASE OF EMERGENCY FOLLOW EXIT SIGNS TO EXIT

- YOU ARE HERE** X
- PRIMARY** ———
- SECONDARY** - - - - -
- FIRE EXTINGUISHER LOCATION** E
- FIRE ALARM PULL STATION** P



170 Douglas Street
Hartford, CT

**SECOND FLOOR
EVACUATION PLAN**

- YOU ARE HERE** X
- PRIMARY** ———
- SECONDARY** - - - - -
- FIRE EXTINGUISHER LOCATION** X
- FIRE ALARM PULL STATION** P
- IN CASE OF EMERGENCY FOLLOW EXIT SIGNS TO EXIT**

1-16 Offices
17-21 Group Rooms
22-24 System Furniture Office Space Area



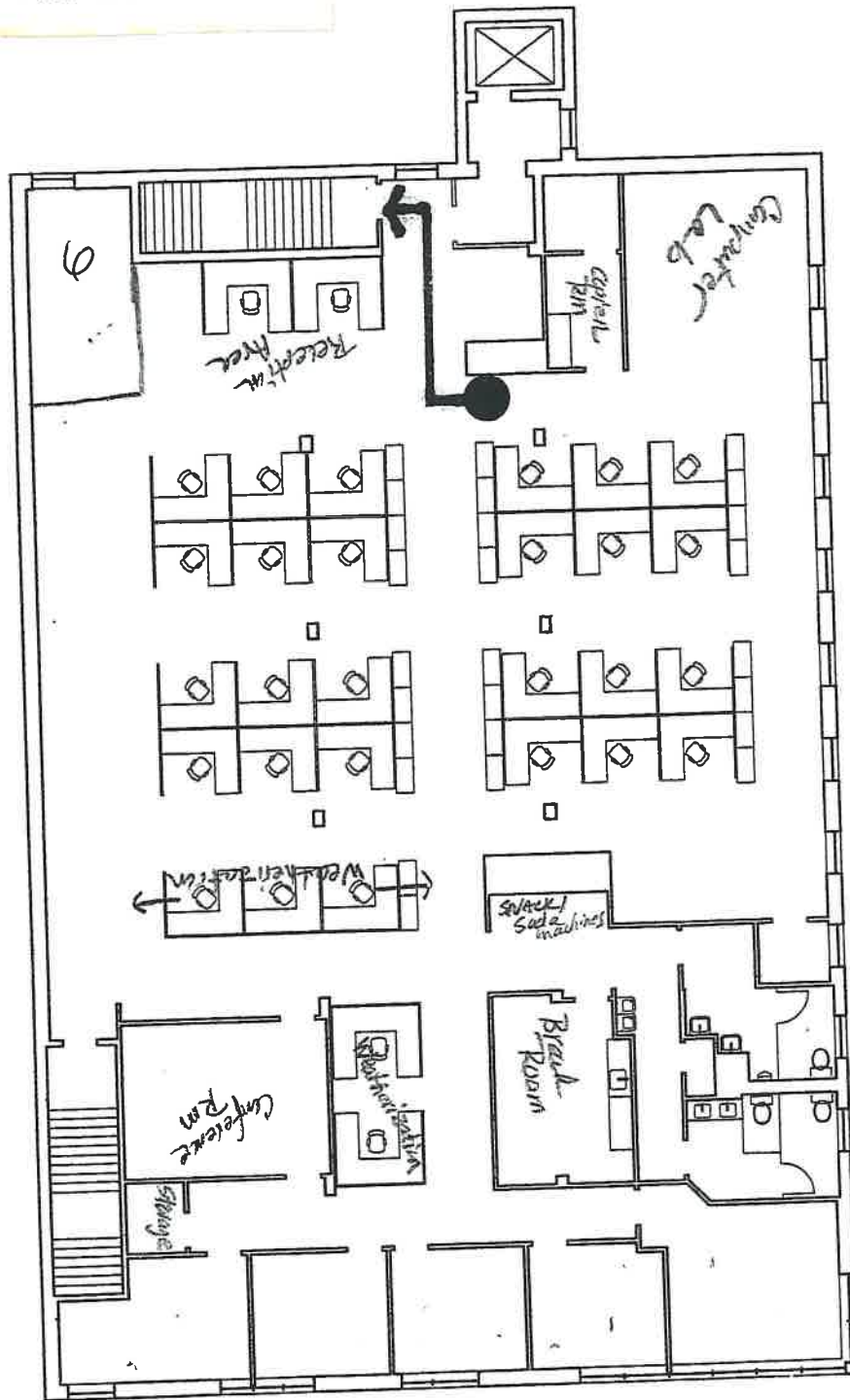
You Are Here ●

Egress Path →

EMERGENCY EGRESS

330 Market Street 1st Floor
Hartford, CT

1-6 Offices

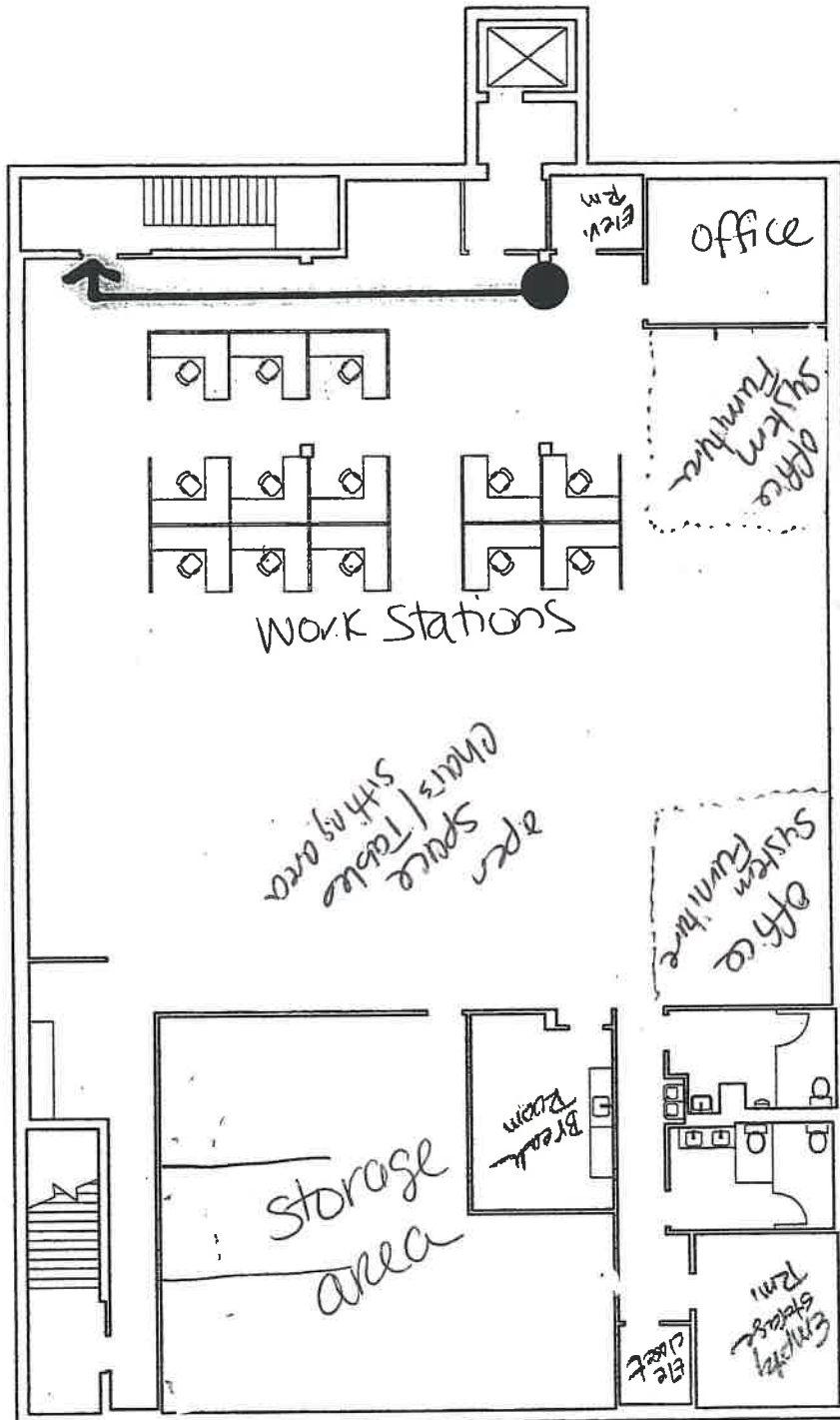


You Are Here ●

Egress Path →

EMERGENCY EGRESS

330 Market Street 2nd Floor
Hartford, CT



You Are Here ●

Egress Path →

EMERGENCY EGRESS / 330 Market Street Basement
Hartford, CT